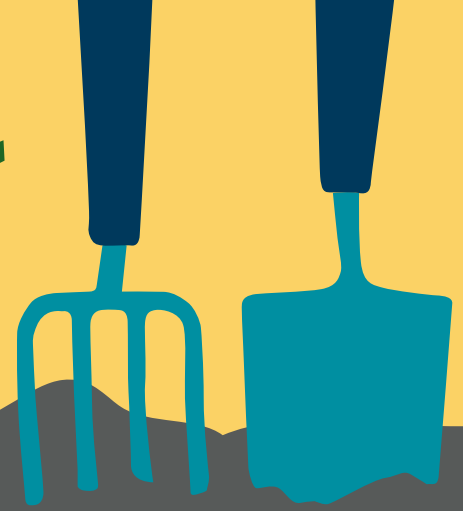


Master Gardener Volunteers!



Join our 2021

Grow This! Oregon Garden Challenge

The second year of the **Grow This! Oregon Garden Challenge**, is much bigger than last year's Challenge! This year we are looking to sign up 8,000 gardeners to grow vegetable and flowers and need your help! Learn more about the challenge here: <https://www.foodhero.org/growthis>.

A **Grow This! Champion**:

1. Must be a current Oregon Master Gardener volunteer or Master Gardeners representing a county demonstration/educational garden.
2. Will need to apply for the **Grow This!** Champion program by midnight February 19 (we are looking to include Master Gardeners from across the state and may need to limit participation if demand exceeds our seed supply). [Master Gardener Champions](#)
3. Will receive one crop seed packet and one flower seed packet. (Type and variety will be selected at random.) Pick up will be at your county in March (specifics will be sent by email)
4. Must agree to give feedback on your growing process and results at least once—but as often as you want—during the Challenge. Feedback could include suggestions, comments, challenges and solutions, stories, photos, drawings or videos that we can share with others (with or without your name). These can be emailed to food.hero@oregonstate.edu or shared on social media adding the following text to any post: @BeAFoodHero and #mastergardener. All feedback is WELCOME.
5. Can count your active time spent on this project as Master Gardener volunteer hours (report as 'community science')

We need your help to grow along and share your expert advice with these gardeners. Please consider signing up to participate as a **Grow This! Champion**.

Your growing tips, comments, challenges and stories will be shared on our social media platforms and in monthly update emails to beginning gardeners as a way to build a growing community across the state. We are so excited to invite you to be a **Grow This!** Champion partner!

Follow us on Social Media!



Point your smartphone or tablet camera at the QR code; click to follow the link that pops up on your screen.



Questions?

Email Brooke.Edmunds@oregonstate.edu or food.hero@oregonstate.edu or leave a voice message at 541-737-1017.



Oregon State University



The Grow This! Oregon Garden Challenge has been adapted from the Grow This! West Virginia Garden Challenge through a partnership with West Virginia University.

BI-MART